

The Feel of Warmness



CASTLE
LANDMARK
— NEW CAPITAL —

CONTENTS



08 WELCOME TO
CASTLE LANDMARK



20 OUR PARTNERS



24 FACILITIES &
AMENITIES



30 CASTLE LANDMARK
PHILOSOPHY



38 INTERIORS



44 MASTER PLAN
& TYPES A,B,C,S

WHY CASTLE LANDMARK


CASTLE
LANDMARK
NEW CAPITAL



" 81% GREEN SPACES "



" LONGEST INSTALLMENT PLAN "



" ENJOY LUXURY LIFESTYLE "



" THE FABULOUS LOCATION "





ABOUT DEVELOPER



CASTLE
DEVELOPMENT

كاسيل للتطوير العمراني

Castle Development is one of the major Real Estate Companies in Egypt. **Castle Development** owns outspread chronicles of massive projects in consulting prime Commercial, Residential & Administrative projects, in Saudi Arabia under the name of **ABC** since 1982 & **Masrya International Group**, which was founded in 1997 in Egypt. ABC Construction Company in KSA focuses on constructing prime Commercial, Residential & Administrative projects including **Maad Towers, KAUST IN II, NCB Bank** and **Red Sea Mall**.

Castle Development was established in 2017. The Company focuses on various purposes related to investment & primary housing residence and delivers several projects in the New Administrative Capital; **Castle Landmark** residential project and **Castle Gate mall** at the R7 zone, in addition to, **East Side** commercial plaza at the MU23 zone.





WELCOME TO CASTLE LANDMARK

Castle Landmark project is located in the outstanding zone R7 in the New Administrative Capital, this unrivaled location is just minutes from the Green River, Main Roads Network, Money & Business District & Governmental District in the New Administrative Capital. The project is built on a space of 43 Acres with a residential area that doesn't cross 19% to be able to offer the majority of the landscape to the greenery and lakes.

The facades of the buildings & master plan are designed in an ultra-modern trend via one of the best architect companies OKOPLAN which has been established in 1993 Stuttgart, Germany. OKOPLAN has been involved in many of Europe's major projects, which is why, given their prestigious portfolio, they were chosen for designing this project.

Castle Landmark project is your novel unprecedented destination for an unparalleled living experience. A place that will take you away from the stressful busy metropolitan life to offer you serenity and luxury. The carefully chosen location will make you forget all about the overpopulated mode of life yet enjoy all the facilities & amenities that would ensure a full-fledged life.




CASTLE
LANDMARK
NEW CAPITAL





LOCATION

Castle Landmark is exemplary located in R7 zone beside Coventry British University in the New Administrative Capital, 5 minutes from Green River, 10 minutes from Governmental District, 10 minutes from Money & Business District, 30 minutes from New Cairo, 35 minutes from Madinaty , 25 minutes from Future City, 10 minutes from Cairo Sokhna Road & 5 minutes from Regional Ring Road. Along with the Monorail railway station of Coventry British University, as it's the nearest Castle Landmark neighborhoods, which facilitates our residents' movements inside & out our community. The Monorail track connecting Cairo from the Stadium station with New Cairo and several stations in New Administrative Capital including (Mohamed Ben Zayed – Al-Masa Hotel – Ministries District).

CASTLE LANDMARK NEIGHBOURHOODS:

- Coventry British University
- Green River
- EXPO City
- The Cathedral





SISTER

COMPANIES

#know_more_about_castle



HOME MANAGEMENT

Castle Development Sign a Memorandum of Understanding with **ABC "Ashi & Bushnag Company"** to Provide consulting and facility management services for Castle Landmark. According to the MoU, ABC will act as the sole provider of consulting and facility management services to Castle Landmark, Castle Development's flagship project situated in the New Administrative Capital.

This agreement comes as part of Castle Development's efforts to introduce high-value residential, commercial, and administrative projects; this time by partnering with a leader in facility management services, one with achievements across the region.

This MoU represents a paradigm shift towards providing comprehensive products with upscale post-sale services which ensures the ability of Castle Landmark project to meet the rapid progress taking place across the real estate industry, as well as maintain quality and smart solutions.

Ashi & Bushnag Company (ABC) awarded grass route projects contracts varies from hotels, residential housing & private villas. Government sector schools and hospitals, parking lots, roads and underground reservoirs swimming pools, office building, manufacturing & conversion industries factories, and industrial falsities. ABC achieved customer satisfaction throughout commitment to QA / QC, health, safety & Environmental established programs, timeframe execution schedules. Good communication and talent taskforce.



Welcome to MIG [Masrya International Group for Engineering and Contracting S.A.E]. We are a national leader of a group of companies specialized in the fields of Infrastructure and Equipment Services, Construction (Design-Build), and Manufacturing of construction materials.

MIG is a group of six integrated firms and is designated as a Grade A company by the Egyptian Federation for Construction & Building Contractors. We have more than 20 years of experience in executing prestigious projects throughout Egypt; where we have built a reputation of delivering projects on time, within budget, and with an outstanding level that represents actual value for our clients. We provide the full range of Engineering, Procurement, and Construction [EPC] Services which include design, building, and project management. Our project list includes hospitals, schools, multiplexes, libraries, hotels, cinemas, sports buildings, and factories, as well as commercial facilities and residential buildings and compounds.

We firmly believe that MIG's success rests clearly on the management skills, and the proficiency, and expertise of its professional staff. Led by a team of experienced managers, technical experts, and engineers; we utilize the most advanced technologies in our field. Access to MIG's specialized supplier companies enables us to offer multidisciplinary services through one entity. This reduces costs, simplifies the most complex projects, and enables us to deliver first class client value. Our Woodwork & Aluminum Company prides itself with its integrity and satisfaction of the requirements of fabrication of Fire Resistant Timber Fire Doors. Finally, our trade company also aspires at achieving utmost customer satisfaction through providing a wide variety of construction products and materials from the global market; in order to fulfill the variable requirements of our own customers and those of the local Egyptian market as well.



CAPITAL LANDMARK

FOR REAL ESTATE DEVELOPMENT

CAPITAL LANDMARK

Capital Landmark is a Real Estate Investment Company established in 2018, owners of several building plots including Castle Landmark project which is in R7 area inside New Administrative Capital that developed by Castle Development Company.



MIRG REAL ESTATE

Castle Development Join forces with **MIRG Real Estate** as its sister company for Real estate Consultancy. MIRG Real Estate Consultancy build long-term relationships, which provides personalized, clear and considered advice on all areas of property in all key markets. MIRG team believe taking a personal approach is crucial when interacting with their clients, as it gives us a detailed understanding of how we can connect them with the perfect property. As one of Egypt's leading Real Estate brokerage and development firms they aim to provide consultancy on the core sectors of Egypt's commercial and residential real estate markets. Their inspired teams naturally provide excellent and dedicated client service. Therefore, they've created a workplace where opinions are respected, everyone is invited to contribute to the success of the business and where excellence is rewarded.

A woman with long dark hair, wearing a dark suit jacket, is holding a large, vibrant green leaf in front of her face. Only her eyes and part of her forehead are visible through the opening of the leaf. The background is a blurred, dark green environment, possibly a forest or a garden. The text "OUR PARTNERS" is overlaid on the left side of the image in a white, sans-serif font.

OUR
PARTNERS



HOME POWER

Castle Development Sign a Memorandum of Understanding with **Schneider Electric Egypt** to Provide Energy Management and Automation to its New Administrative Project of Castle Landmark. A collaboration between Castle Development & Schneider Electric Egypt to provide innovative solution to manage energy and components of the infrastructure at Castle Landmark, agreed that the latter will work with Castle Development in building and designing smart facilities employing Schneider Electric's innovative solutions to manage levels of energy consumption, as well as provide safe, efficient, and environmentally friendly products. This will contribute to the company's vision of building distinct and different products for smart cities, as well as support our efforts towards achieving environmental sustainability by using the elements from the environment effectively to create a smart urban community that accommodates a variety of customer needs.



HOTEL APARTMENTS MANAGEMENT

Castle Development signed a Memorandum of Understanding with HELWAN for Hotels Management. This MoU is set to provide management services for the hotel apartments that will be offered in Castle Landmark Compound. Castle Landmark hotel apartments are supposed to consist of Unites, Restaurant, Gym, Swimming Pool, as well as the utilities, and the necessary services pertained to a first-class hotel apartment. Worth to mention that HELWAN is affiliated to Scandinavian International Hotel chain in Denmark that was established in 1982. The group has accomplished various activities of owning, managing and developing top of international hotels around the world. The MoU guarantees a pleasurable experience of living in Castle Landmark; as the collaboration between Castle Development & HELWAN aim at ensuring quality services to meet great expectations of Castle Landmark residents at their luxury serviced apartment, which provides the highest standards of accommodation.



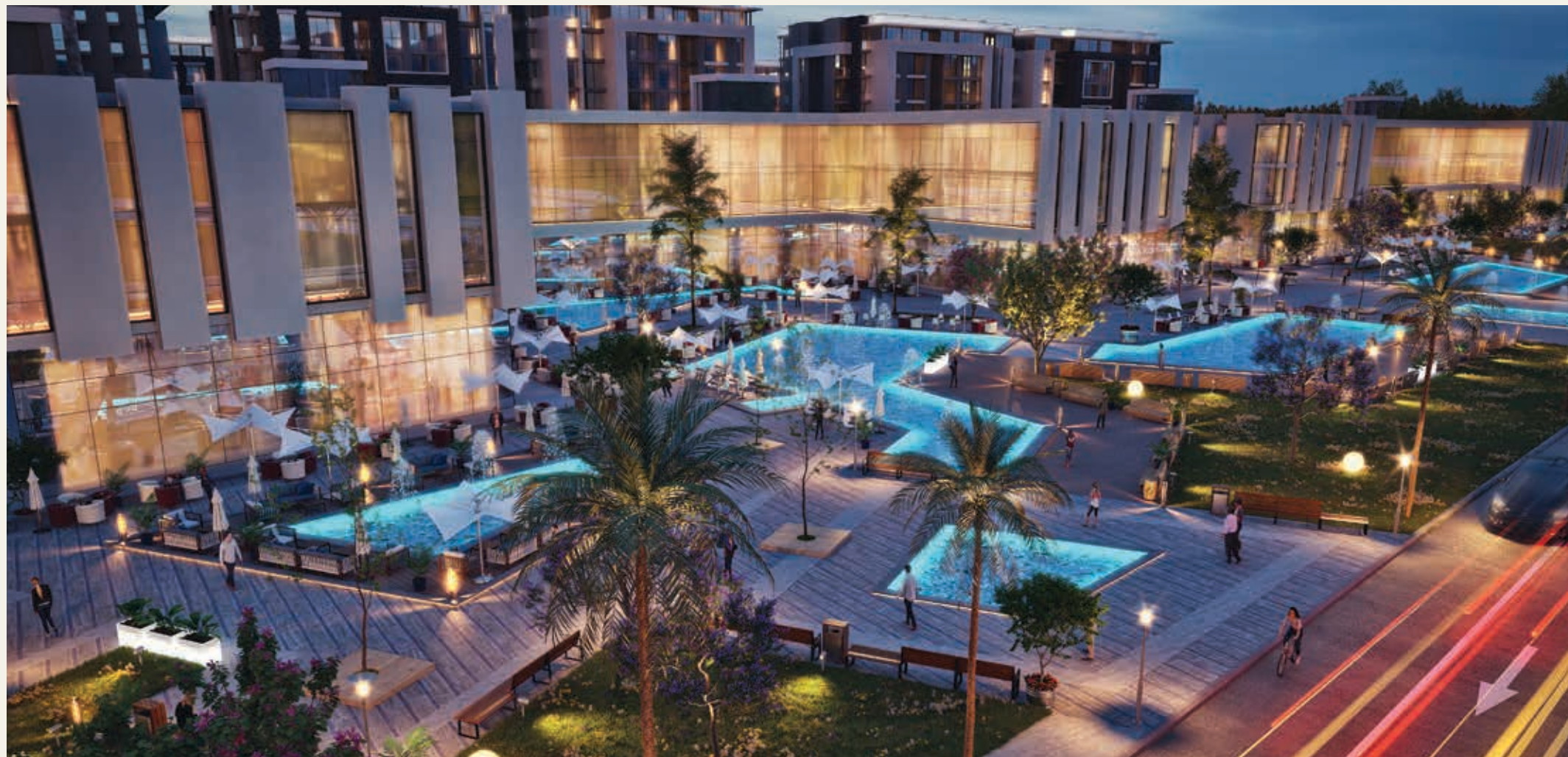
HOME INSURANCE

Castle Development and **Allianz Insurance – Egypt** Sign A Protocol to Grant Insurance Systems. The agreement acknowledges that Castle Development is the first real estate developer in Egypt to implement insurance systems that benefit customers. According to this agreement, Allianz Insurance – Egypt will cover all remaining installments in case the owner, who purchased property from Castle Development, passed away; consequently, the owner's family members become legitimate heirs of that property without committing to paying off any remaining dues. This protocol In line with the company's commitment and sense of responsibility towards our customers, we believe it is necessary to provide different solutions that deliver value and security. Castle Development always join forces with entities that possess the experience that enables them to accommodate our standards and set of objectives when it comes to developing modern real estate.

A low-angle, close-up shot of a person's legs and feet as they walk on a cobblestone path. The person is wearing dark blue leggings and light-colored sneakers. The path is made of irregular grey stones and is bordered by a concrete curb on the left. To the left of the path is a grassy area with some fallen leaves, and to the right is a dense green bush. The overall lighting is soft and natural, suggesting an outdoor setting like a park or a residential area.

FACILITIES & AMENITIES

CASTLE GATE MALL



ENJOY YOUR LIFE STYLE

Castle gate is impeccable expansion commercial business for **Castle Development**. Castle gate is your neoteric egress for Castle Landmark Compound in New Administrative Capital. Castle Gate, is our newly marvelous project business environment and facilities released opportune client's demand & desire comprises Administrative, Medical, & Retail business services. We intentionally fulfil to create more luxurious future through memorial experiences for you.

Castle gate, our inimitable commercial hub designed masterly by the superior company OKO-PLAN. Castle Gate synthesizes a populace endeavors preeminence. Eventually, A focal point where people create social gatherings in Restaurants & cafes, Shopping experiences in Retail Outlets, and start professionally in their Offices and Clinics. Throughout Castle Gate Mall you will find a wide range of assistance amenities that will assure a pleasurable experience for you.



CLUBHOUSE & SPORTS ARENA



ENERGIZE YOUR LIFE

Castle Landmark Clubhouse is the true venue of how a happy & healthy life should be ..

A community that gets a vision of perfection & mixture of incomparable hospitality and leisure. Castle landmark Clubhouse gives you unparalleled life by providing various social events & gatherings. Our unique Clubhouse brings a great way to socialize & grant the residents intimate recreational activities including swimming pools & health SPA.

Your ultimate enjoyment is what we aim for; the clubhouse offers fitness activities in our GYM, Football, Tennis & Squash courts. A part from this, outdoor yards and workout areas to engage in different type of sports with separate lanes for bicycles & jogging to fulfil your needs without the need of going out of your community.



A woman with long dark hair, wearing a light blue, long-sleeved, belted dress, stands in a garden. She is holding a bouquet of light-colored flowers. In the background, there is a fountain with water spraying upwards. The scene is bathed in a soft, natural light, and the overall color palette is dominated by greens and blues.

CASTLE LANDMARK

PHILOSOPHY



GREEN SPACES & WALKABILITY

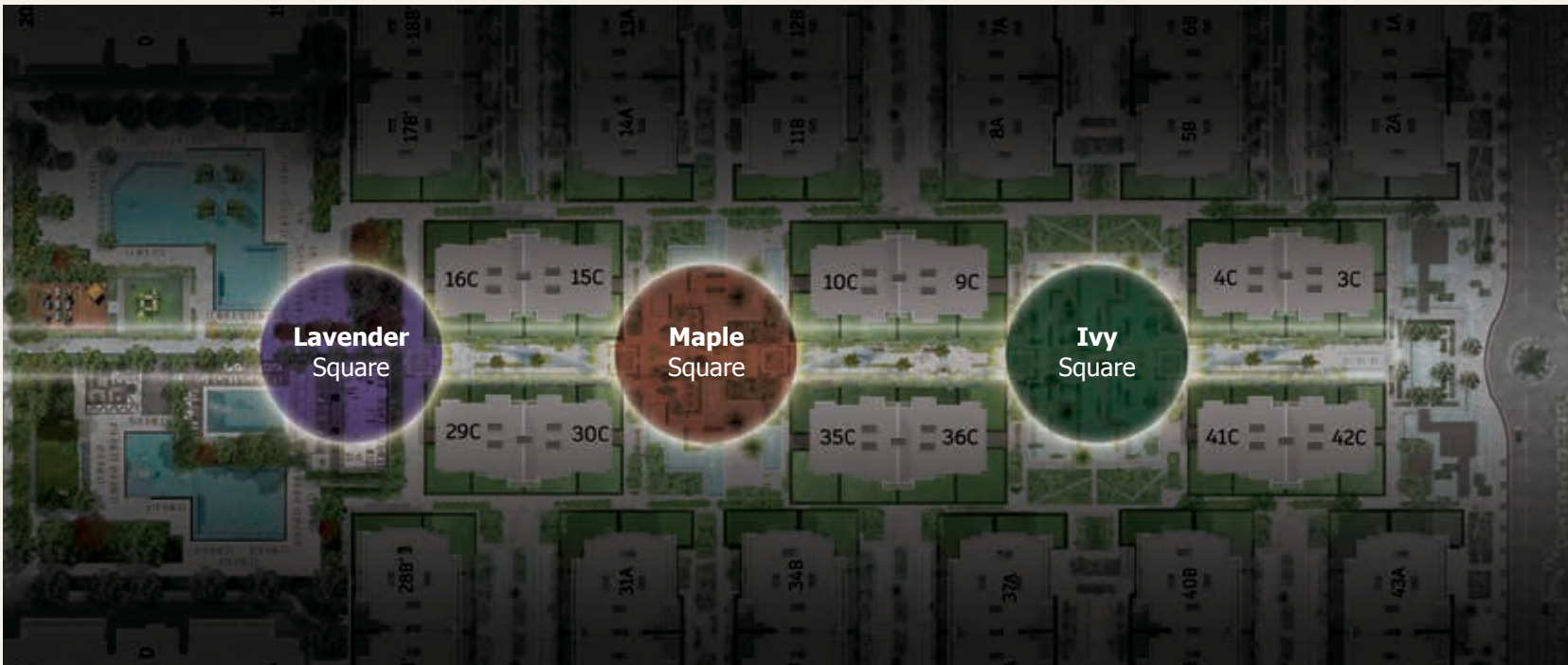
Castle Landmark strives to induce a relaxation mode. Hence, the design separate lanes for bicycles & jogging as well as the presence of a fully equipped club house. Castle Landmark allowed a chance of walking through 81% greenery spaces as the project area is 41.5 acres, and the building area ratio is 19% of the project area. People with special needs will be taken care of in Castle Landmark since all the entrances and inner roads incorporate special spots for them to facilitate their movement, thus ensure enjoyment and practicality to all residents' segments. Distances range from one building to another from 21 to 70 meters to enjoy the natural scenery and all building Types are well noted with exquisite entrances & concierge of space area 120 m² & concierge to suit the capacity of each building and enhance the sense of security & privacy.





GREEN ENVIRONMENT

Castle Landmark takes you through full of nature environment details as part of an incredible living experience. A community that is all about nature, we keen on making your life healthier & more exciting. Castle Landmark masterly planned ultimate breath-taking surroundings wherever your location is in you'll find uniqueness. Experience a truly art of living by dividing our areas into squares with different flower name & type. Giving you **Maple, Lavender & Ivy Plants Squares**, each of them reflects specific atmosphere vary between a sense of serenity & calmness representing feel of luxury life.



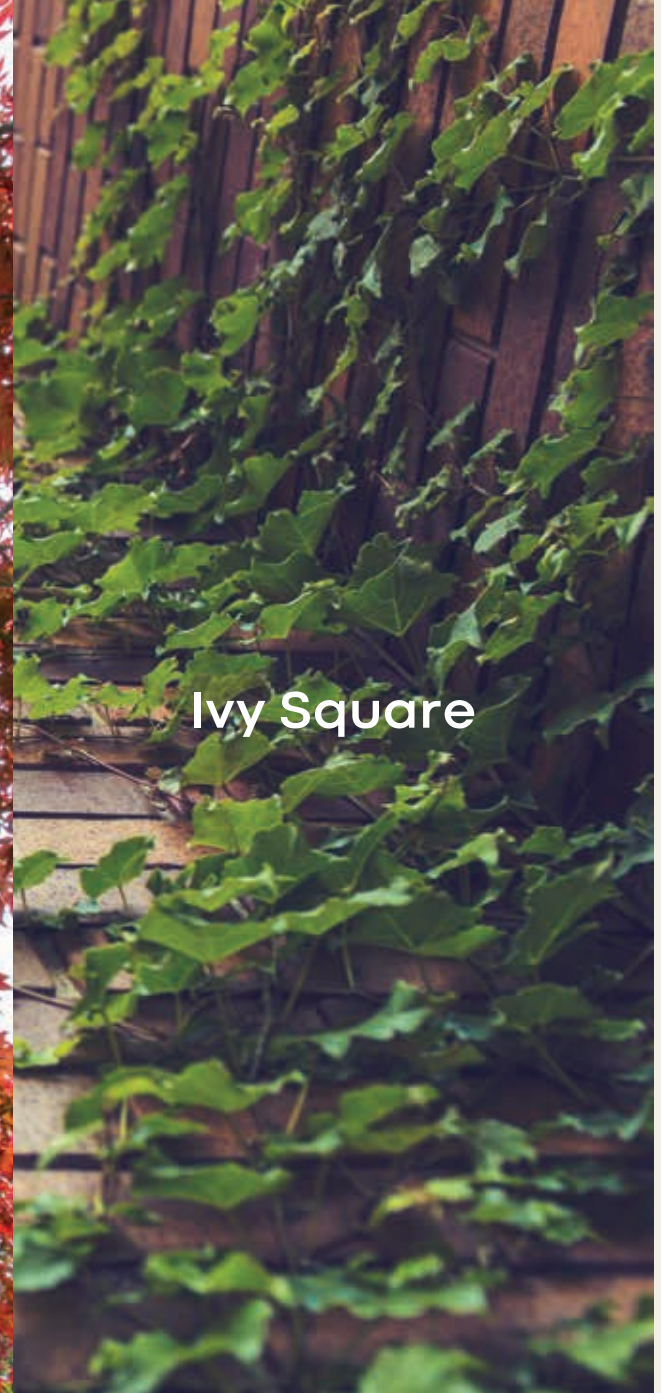
- Lavender Square
- Maple Square
- Ivy Square



Lavender Square



Maple Square



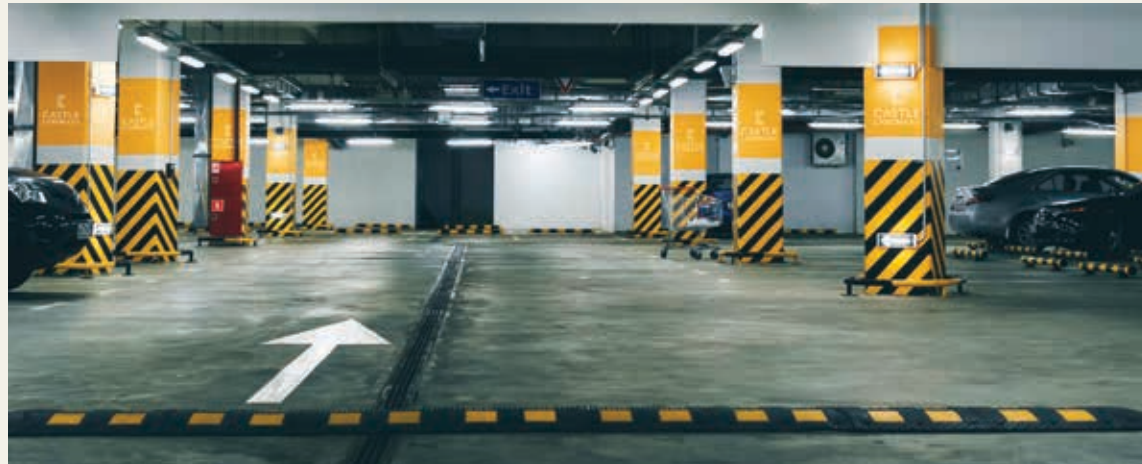
Ivy Square



SOLAR ENERGY & PARKING

Castle Landmark provides latest technology and smart solutions through modern innovations in managing levels of energy consumption as well as preserve the environment. Castle Landmark make use of the merits of solar energy depending on it to ultimate 70% of its total area to ensure safe, efficient and environmentally friendly products.

Castle Landmark masterfully designed a large underground parking along the compound to have a feel of real comfort redefined and an ease accessible to your building and lessen your hassle to find your parking slot as your peace of mind is our major goal.



INTERIOR



DESIGN & FINISHING

Castle Landmark brings ultimate interior design to live in a place that belongs to your heart through remarkable style of furnishings & architecture. Home interior reflects sense of simplicity & warmth with preserving the luxury features. Behind every door, our outstanding mixture selection of style, design & function is very consistent and harmonious. Your luxurious journey begins here in your dream smart home .. Castle Landmark interior offers an extraordinary blend of exclusivity, luxury & comfort through well-chosen finishing materials & pieces to live in the place of your dreams, where each & every corner of your home goes as long as you love it.





CASTLE LANDMARK MASTER PLAN

GROUND &
TYPICAL FLOOR





Type
A & B



CASTLE
LANDMARK
— NEW CAPITAL —

NOTE: Walls and columns are included in the dimensions

Gross Area
Garden Area

130 m²
72 m²

NO	Location	Dimensions
1	Entrance	3.0 x 2.6
2	Reception	3.8 x 5.5
3	Dining	4.1 x 2.3
4	Terrace	1.9 x 1.4
5	Kitchen	3.0 x 2.5
6	Bedroom	3.8 x 4.0
7	Master Bedroom	4.1 x 3.8
8	Dressing Room	3.2 x 1.9
9	Master Bathroom	2.5 x 2.2
10	Terrace	3.6 x 1.4
11	Bathroom	2.5 x 2.2
12	Corridor	2.3 x 1.4

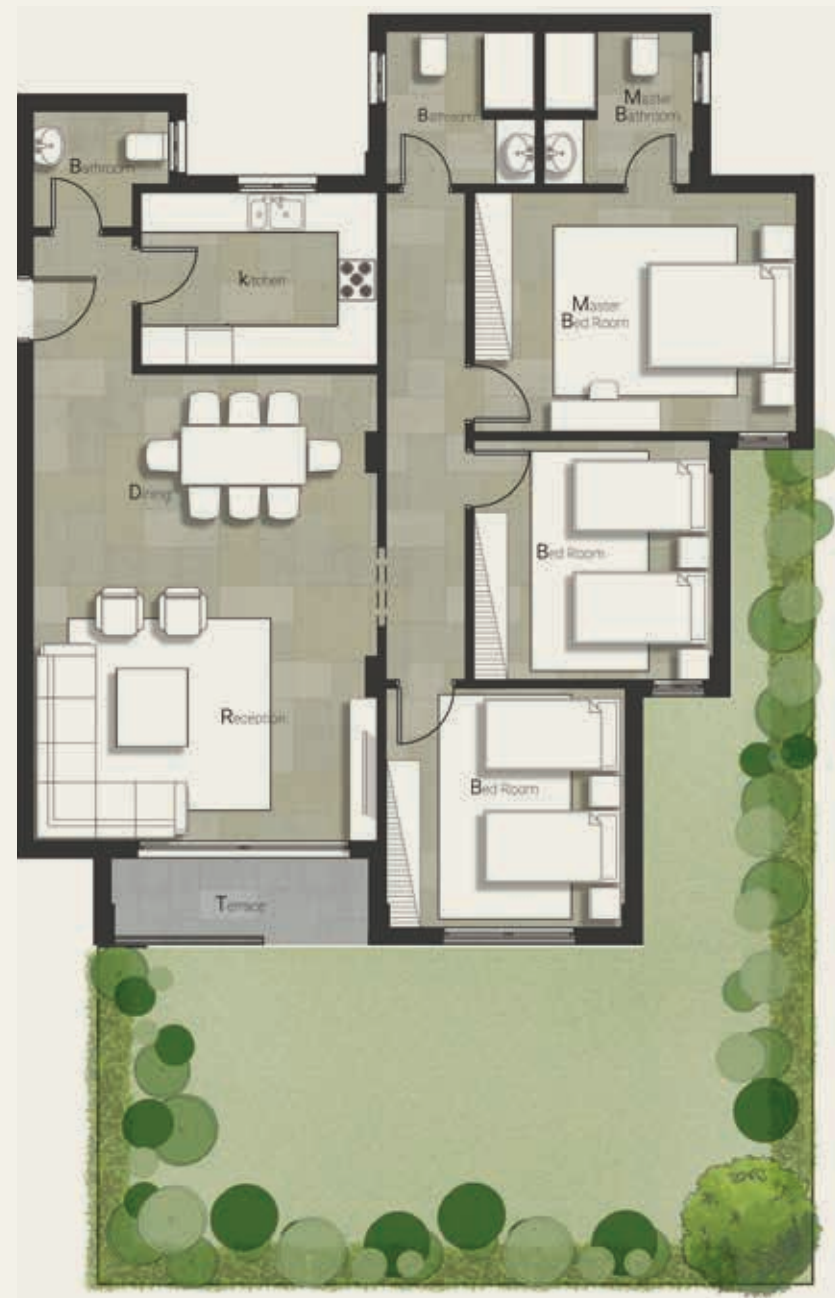


GROUND FLOOR



GROUND FLOOR

NOTE: Walls and columns are included in the dimensions



Gross Area 175 m²
Garden Area 66.5 m²

NO	Location	Dimensions
1	Entrance	2.3 x 1.7
2	Reception	7.3 x 5.4
3	Kitchen	3.8 x 2.8
4	Toilet	2.2 x 2.2
5	Terrace	4.1 x 1.4
6	Bedroom A	3.8 x 3.8
7	Bedroom B	3.8 x 3.8
8	Master Bedroom	5.1 x 3.8
9	Master Bathroom	2.5 x 2.5
10	Bathroom	2.5 x 2.5
11	Corridor	7.5 x 1.4



GROUND FLOOR

NOTE: Walls and columns are included in the dimensions



Gross Area 177 m²
Garden Area 90.5 m²

NO	Location	Dimensions
1	Entrance	3.2 x 1.8
2	Reception	4.3 x 3.8
3	Dining	5.4 x 2.9
4	Kitchen	3.8 x 4.0
5	Toilet	1.9 x 2.2
6	Terrace	4.2 x 1.6
7	Bedroom A	3.8 x 3.8
8	Bedroom B	4.0 x 3.8
9	Master Bedroom	3.8 x 5.1
10	Master Bathroom	2.5 x 2.7
11	Bathroom	2.5 x 2.7
12	Corridor	7.9 x 1.4





NOTE: Walls and columns are included in the dimensions

Gross Area 177 m²
Garden Area 72 m²

NO	Location	Dimensions
1	Entrance	1.7 x 2.4
2	Reception	7.3 x 5.5
3	Kitchen	3.9 x 2.9
4	Toilet	2.2 x 2.2
5	Terrace	4.2 x 1.4
6	Bedroom A	3.9 x 3.9
7	Bedroom B	3.9 x 3.9
8	Master Bedroom	3.8 x 5.1
9	Master Bathroom	2.5 x 2.4
10	Bathroom	2.5 x 2.4
11	Corridor	7.5 x 1.4



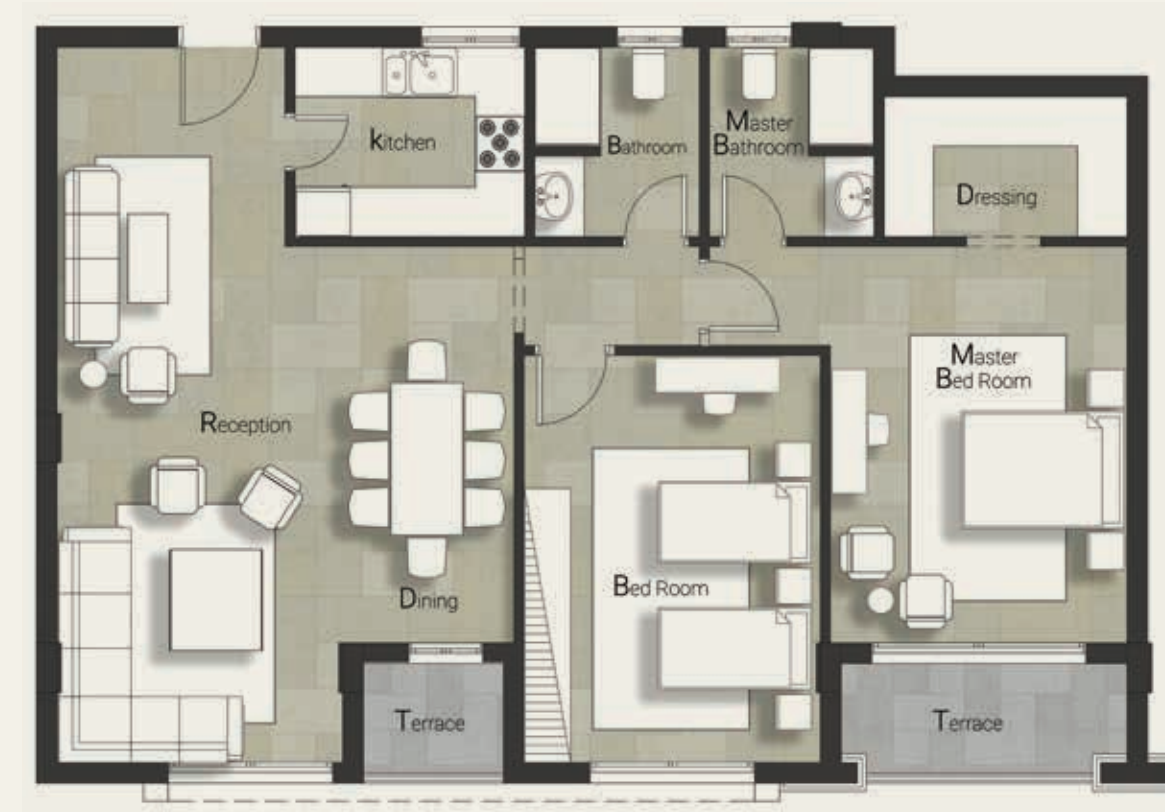
GROUND FLOOR



NOTE: Walls and columns are included in the dimensions

Gross Area **195 m²**
Garden Area **70.5 m²**

NO	Location	Dimensions
1	Entrance	1.7 x 2.0
2	Reception	7.8 x 4.3
3	Terrace	4.0 x 1.4
4	Kitchen	3.4 x 2.7
5	Toilet	1.4 x 2.1
6	Maid's Room	2.6 x 2.2
7	Bathroom	1.4 x 2.6
8	Bedroom A	3.8 x 3.8
9	Bedroom B	3.8 x 4.0
10	Master Bedroom	3.8 x 5.1
11	Master Bathroom	2.7 x 2.5
12	Bathroom	2.7 x 2.5
13	Corridor 1	1.0 x 2.2
14	Corridor 2	1.7 x 4.2
15	Corridor 3	7.5 x 1.4



NOTE: Walls and columns are included in the dimensions

Gross Area **145 m²**

NO	Location	Dimensions
1	Entrance	2.9 x 2.6
2	Reception	6.5 x 3.7
3	Dining	3.0 x 4.0
4	Terrace	2.7 x 1.9
5	Kitchen	3.0 x 2.5
6	Bedroom	5.2 x 3.9
7	Master Bedroom	4.9 x 4.0
8	Dressing Room	1.9 x 3.2
9	Master Bathroom	2.5 x 2.2
10	Bathroom	2.5 x 2.2
11	Corridor 1	1.4 x 2.3
12	Master-B Corridor	1.4 x 1.7



GROUND FLOOR

TYPICAL FLOOR

NOTE: Walls and columns are included in the dimensions



Gross Area 150 m²

NO	Location	Dimensions
1	Entrance	3.0 x 2.6
2	Reception	6.5 x 3.7
3	Dining	2.4 x 4.7
4	Kitchen	3.0 x 2.5
5	Terrace	1.9 x 1.7
6	Bedroom	5.0 x 3.8
7	Master Bedroom	5.0 x 3.8
8	Dressing Room	3.2 x 1.9
9	Terrace	3.6 x 1.4
10	Bathroom	2.3 x 2.5
11	Bathroom	2.3 x 2.5
12	Master-B	1.4 x 2.3
13	Corridor	1.4 x 1.7



TYPICAL FLOOR





NOTE: Walls and columns are included in the dimensions

Gross Area 190 m²

NO	Location	Dimensions
1	Entrance	2.9 x 1.7
2	Reception	4.8 x 4.3
3	Dining	5.4 x 2.9
4	Terrace	1.5 x 4.2
5	Kitchen	3.9 x 3.9
6	Toilet	2.2 x 2.8
7	Bedroom A	4.9 x 3.9
8	Bedroom B	3.8 x 4.1
9	Terrace	1.2 x 1.2
10	Master Bedroom	5.2 x 3.8
11	Terrace	1.3 x 1.2
12	Bathroom	2.4 x 2.5
13	Bathroom	2.4 x 2.5
14	Corridor	7.7 x 1.4



TYPICAL FLOOR



NOTE: Walls and columns are included in the dimensions

Gross Area 200 m²

NO	Location	Dimensions
1	Entrance	2.9 x 1.7
2	Reception	4.6 x 4.4
3	Dining	5.4 x 3.8
4	Terrace	4.3 x 1.6
5	Kitchen	3.8 x 3.0
6	Toilet	1.7 x 2.5
7	Bedroom A	5.1 x 3.9
8	Bedroom B	3.9 x 3.9
9	Terrace	1.3 x 1.4
10	Master Bedroom	5.1 x 4.1
11	Terrace	1.3 x 1.4
12	Bathroom	2.6 x 2.5
13	Bathroom	2.5 x 2.5
14	Corridor 1	7.5 x 1.4
15	Corridor 2	2.1 x 0.8



TYPICAL FLOOR



NOTE: Walls and columns are included in the dimensions

Gross Area **205 m²**

NO	Location	Dimensions
1	Entrance	4.1 x 1.7
2	Reception	8.8 x 4.2
3	Terrace	1.4 x 4.0
4	Kitchen	3.4 x 2.7
5	Toilet	1.7 x 2.5
6	Maid's Room	2.2 x 2.6
7	Bathroom 1	2.2 x 1.3
8	Bedroom A	4.8 x 3.8
9	Bedroom B	3.8 x 3.8
10	Terrace	1.3 x 1.2
11	Master Bedroom	3.8 x 5.1
12	Terrace	1.3 x 1.2
13	Bathroom	2.5 x 2.4
14	Bathroom	2.5 x 2.4
15	Corridor 1	3.5 x 1.7
16	Corridor 2	7.5 x 1.4



TYPICAL FLOOR

NOTE: Walls and columns are included in the dimensions

Gross Area **210 m²**

NO	Location	Dimensions
1	Entrance	2.1 x 1.7
2	Corridor 1	2.3 x 1.0
3	Corridor 2	1.7 x 4.0
4	Reception	8.8 x 4.3
5	Terrace	4.1 x 1.6
6	Kitchen	2.7 x 3.3
7	Maid's Room	2.6 x 2.3
8	Toilet	1.3 x 1.4
9	Toilet	2.3 x 2.2
10	Bedroom A	4.9 x 3.8
11	Bedroom B	3.8 x 3.8
12	Terrace	1.3 x 1.5
13	Master Bedroom	5.1 x 3.8
14	Terrace	1.4 x 1.5
15	Bathroom	2.5 x 2.5
16	Bathroom	2.4 x 2.5
17	Corridor 3	7.6 x 1.5



TYPICAL FLOOR



Type
C



CASTLE
LANDMARK
— NEW CAPITAL —

NOTE: Walls and columns are included in the dimensions

Gross Area 120 m²
Garden Area 125.5 m²

NO	Location	Dimensions
1	Reception	3.8 x 10.1
2	Kitchen	4.2 x 3.0
3	Bedroom	3.8 x 3.8
4	Master Bedroom	4.1 x 4.1
5	Terrace	1.7 x 2.2
6	Bathroom	2.2 x 2.6
7	Corridor 1	6.3 x 1.4
8	Corridor 2	2.0 x 2.3



NOTE: Walls and columns are included in the dimensions

Gross Area 120 m²
Garden Area 79 m²

NO	Location	Dimensions
1	Reception	7.7 x 3.8
2	Kitchen	3.6 x 4.2
3	Bathroom	2.6 x 3.2
4	Bedroom	3.8 x 3.9
5	Master Bedroom	3.8 x 3.8
6	Terrace	2.1 x 1.5
7	Corridor 1	3.6 x 1.3
8	Corridor 1	4.2 x 1.4





NOTE: Walls and columns are included in the dimensions

Gross Area 135 m²
Garden Area 50 m²

NO	Location	Dimensions
1	Entrance	1.7 x 2.2
2	Reception	7.3 x 3.8
3	Terrace	4.4 x 1.4
4	Kitchen	4.4 x 3.3
5	Toilet	2.8 x 1.6
6	Bedroom	3.8 x 3.8
7	Master Bedroom	3.8 x 5.2
8	Master Bathroom	2.5 x 2.4
9	Bathroom	2.5 x 2.2
10	Corridor	1.8 x 1.4



GROUND FLOOR



NOTE: Walls and columns are included in the dimensions

Gross Area 200 m²
Garden Area 116.5 m²

NO	Location	Dimensions
1	Entrance	2.1 x 2.8
2	Reception	7.7 x 3.8
3	Terrace	3.7 x 1.2
4	Kitchen	4.5 x 3.4
5	Bedroom A	3.8 x 4.0
6	Bedroom B	4.0 x 3.8
7	Master Bedroom	4.1 x 3.8
8	Dressing Room	3.7 x 2.1
9	Master Bathroom	3.2 x 2.3
10	Bathroom	3.0 x 2.3
11	Living Room	3.0 x 4.0
12	Toilet	2.8 x 1.7
13	Corridor 1	3.3 x 1.4
14	Corridor 2	7.6 x 1.4



GROUND FLOOR



NOTE: Walls and columns are included in the dimensions

Gross Area **154 m²**

NO	Location	Dimensions
1	Entrance	2.0 x 2.2
2	Reception	5.2 x 4.4
3	Dining	3.2 x 3.8
4	Kitchen	4.4 x 3.4
5	Toilet	2.8 x 1.6
6	Terrace	4.4 x 1.3
7	Bedroom	5.0 x 3.8
8	Master Bedroom	6.2 x 3.8
9	Master Bathroom	2.4 x 2.6
10	Bathroom	2.4 x 2.6
11	Corridor	1.7 x 1.4



TYPICAL FLOOR



NOTE: Walls and columns are included in the dimensions

Gross Area 225 m²

NO	Location	Dimensions
1	Entrance	2.0 x 2.7
2	Kitchen	4.7 x 4.0
3	Toilet	2.8 x 1.6
4	Reception 1	3.8 x 7.6
5	Reception 2	2.6 x 2.4
6	Terrace	3.7 x 1.2
7	Bedroom	3.7 x 3.8
8	Terrace	1.3 x 1.8
9	Bedroom	5.1 x 3.8
10	Master Bedroom	3.8 x 4.1
11	Dressing Room	3.7 x 2.0
12	Master Bathroom	3.8 x 2.3
13	Terrace	3.8 x 1.3
14	Bathroom	3.0 x 2.2
15	Living Room	4.1 x 3.0
16	Corridor 1	1.4 x 3.2
17	Corridor 2	7.8 x 1.3



TYPICAL FLOOR



NOTE: Walls and columns are included in the dimensions

Gross Area **285 m²**

NO	Location	Dimensions
1	Reception 1	6.2 x 5.4
2	Reception 2	5.3 x 4.0
3	Dining	3.4 x 5.1
4	Terrace 1	5.4 x 2.0
5	Kitchen	4.0 x 4.2
6	Terrace 2	2.2 x 2.5
7	Guest Toilet	3.5 x 1.8
8	Maid's Room	3.6 x 5.0
9	Maid's Bathroom	2.2 x 2.2
10	Corridor 1	1.5 x 1.5
11	Bedroom 1	4.9 x 3.6
12	Bedroom 2	4.9 x 3.6
13	Terrace 3	1.5 x 1.4
14	Bedroom 3	3.6 x 3.8
15	Bathroom	2.3 x 3.8
16	Master Bedroom	3.7 x 4.3
17	Dressing Room	2.8 x 2.3
18	Master Bathroom	2.8 x 2.0
19	Master-B Corridor	1.3 x 2.7
20	Corridor 2	1.5 x 3.6
21	Corridor 3	1.2 x 2.5
22	Open Living Area	3.3 x 5.4



TYPICAL FLOOR

Type
S



CASTLE
LANDMARK
— NEW CAPITAL —



NOTE: Walls and columns are included in the dimensions

Gross Area 148 m²
Garden Area 57 m²

NO	Location	Dimensions
1	Entrance	1.5 x 2.8
2	Kitchen	3.2 x 2.7
3	Reception/Dining	6.9 x 4.0
4	Terrace	1.8 x 3.9
5	Bedroom 1	3.9 x 3.9
6	Bedroom 2	3.9 x 3.9
7	Master Bedroom	3.9 x 4.7
8	Master Bathroom	3.1 x 2.1
9	Master Bedroom Corridor	0.9 x 1.3
10	Bathroom	2.8 x 2.2
11	Corridor	5.1 x 1.5



GROUND FLOOR



GROUND FLOOR

NOTE: Walls and columns are included in the dimensions



Gross Area 175 m²
Garden Area 81 m²

NO	Location	Dimensions
1	Entrance	1.5 x 1.2
2	Reception/Dining	3.8 x 10.2
3	Kitchen	3.6 x 3.0
4	Bedroom 1	3.8 x 3.8
5	Bedroom 2	3.8 x 3.8
6	Master Bedoom	4.2 x 4.7
7	Master Bathroom	3.3 x 3.0
8	Dressing Room	3.0 x 2.1
9	Bathroom	3.0 x 3.3
10	Corridor	5.0 x 1.3



NOTE: Walls and columns are included in the dimensions



Gross Area 245 m²
A14-A32 Garden 88 m²
A13-A31 Garden 89 m²

NO	Location	Dimensions
1	Entrance	1.5 x 3.7
2	Kitchen	3.6 x 2.4
3	Reception	3.8 x 8.9
4	Dining	5.2 x 3.8
5	Bedroom 1	3.8 x 4.7
6	Bedroom 2	5.0 x 3.8
7	Master Bedoom	3.8 x 5.8
8	Master Bathroom	2.3 x 3.8
9	Dressing Room	1.9 x 3.8
10	Living Room	4.8 x 4.0
11	Bathroom	2.7 x 3.8
12	Corridor 1	1.4 x 7.1
13	Corridor 2	5.7 x 1.4





GROUND FLOOR

NOTE: Walls and columns are included in the dimensions



Gross Area 142 m²
Garden Area 51.5 m²

NO	Location	Dimensions
1	Entrance	1.4 x 1.5
2	Reception/Dining	7.4 x 3.8
3	Terrace	1.5 x 3.7
4	Kitchen	3.8 x 2.5
5	Bedroom 1	3.8 x 3.8
6	Bedroom 2	3.8 x 3.8
7	Master Bedroom	3.8 x 3.9
8	Master Bathroom	1.9 x 2.5
9	Bathroom	2.2 x 2.5
10	Corridor 1	5.2 x 1.4
11	Corridor 2	1.6 x 1.5





NOTE: Walls and columns are included in the dimensions

Gross Area 155 m²
Garden Area 61 m²

NO	Location	Dimensions
1	Reception/Dining	3.8 x 8.7
2	Kitchen	3.6 x 2.8
3	Bedroom 1	3.8 x 3.8
4	Bedroom 2	3.8 x 3.8
5	Master Bedoom	3.8 x 4.6
6	Master Bathroom	2.8 x 2.0
7	Bathroom	2.8 x 1.9
8	Terrace	1.5 x 4.9
9	Corridor 1	1.2 x 3.9
10	Corridor 2	5.0 x 1.5



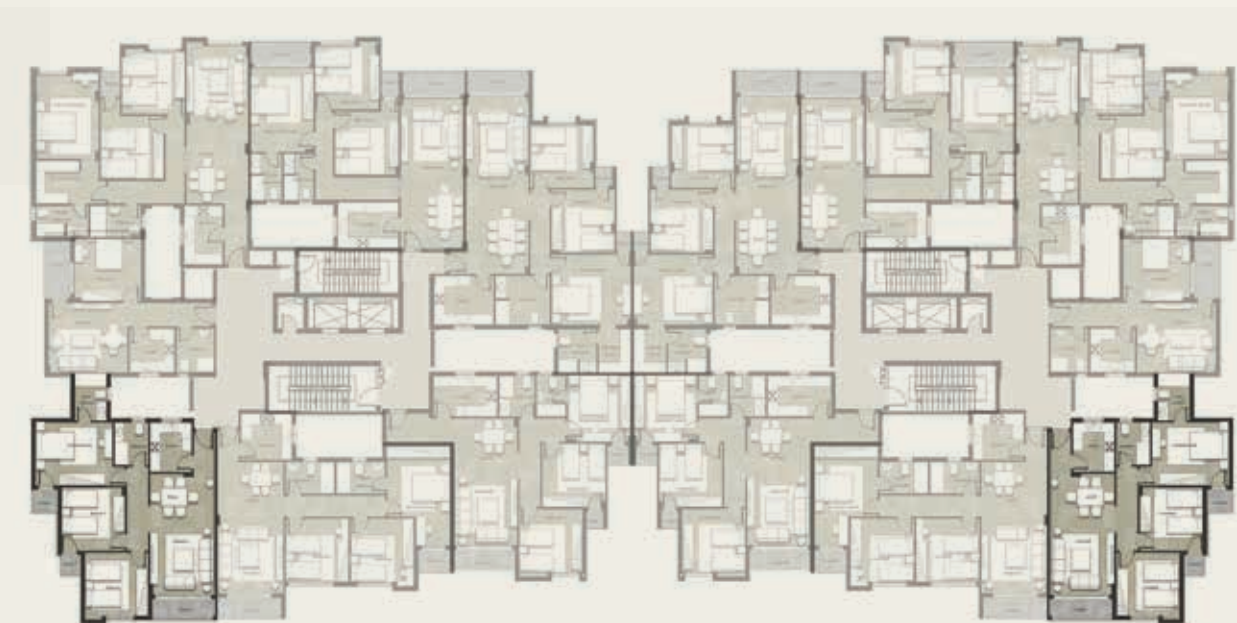
GROUND FLOOR



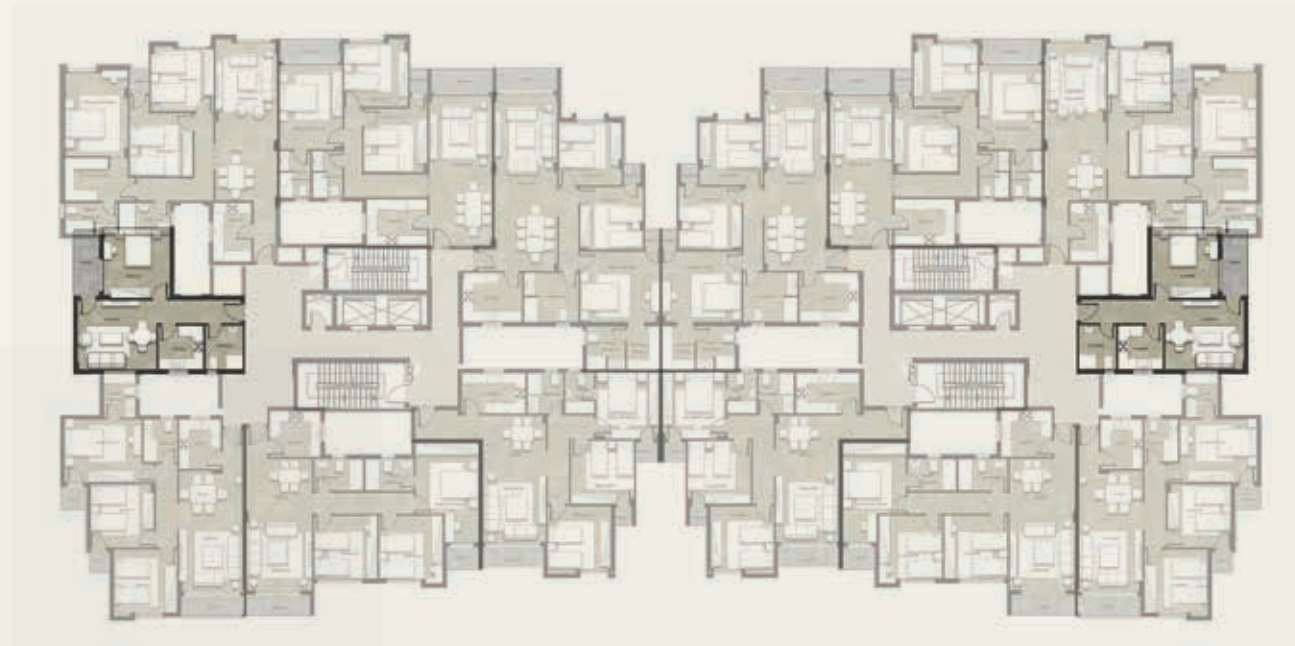
NOTE: Walls and columns are included in the dimensions

Gross Area 150 m²

NO	Location	Dimensions
1	Entrance	2.8 x 1.4
2	Kitchen	3.1 x 2.6
3	Reception/Dining	7.1 x 3.9
4	Terrace 1	3.8 x 1.5
5	Bedroom 1	3.8 x 3.8
6	Terrace 2	1.4 x 1.2
7	Bedroom 2	3.8 x 3.8
8	Terrace 3	1.5 x 1.5
9	Master Bedoom	3.8 x 4.6
10	Master Bathroom	2.9 x 2.0
11	Master-B Corridor	0.8 x 1.2
12	Bathroom	2.6 x 2.1
13	Corridor	5.1 x 1.4



TYPICAL FLOOR



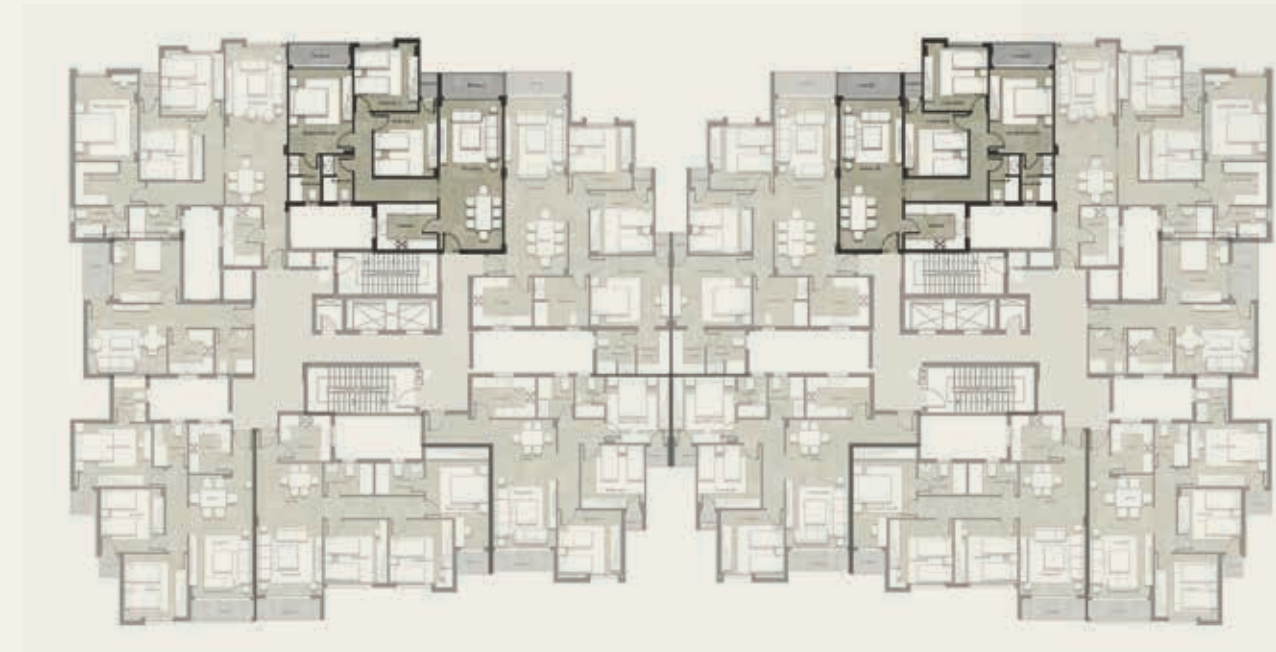
Gross Area 80 m²

NO	Location	Dimensions
1	Entrance	5.1 x 1.4
2	Reception/Dining	4.1 x 4.9
3	Kitchen	2.8 x 2.5
4	Bedroom 1	4.3 x 3.8
5	Bathroom	2.6 x 2.3
6	Terrace	1.8 x 3.6

NOTE: Walls and columns are included in the dimensions

Gross Area 160 m²

NO	Location	Dimensions
1	Reception	3.8 x 8.7
2	Terrace 1	1.6 x 3.7
3	Kitchen	3.7 x 2.8
4	Bedroom 1	3.8 x 3.8
5	Terrace 2	1.5 x 3.7
6	Bedroom 2	3.8 x 3.8
7	Master Bedroom	3.8 x 5.0
8	Terrace 3	1.5 x 3.7
9	Master Bathroom	2.8 x 2.0
10	Bathroom	1.9 x 2.8
11	Corridor 1	5.0 x 1.5
12	Corridor 2	3.9 x 1.2



TYPICAL FLOOR

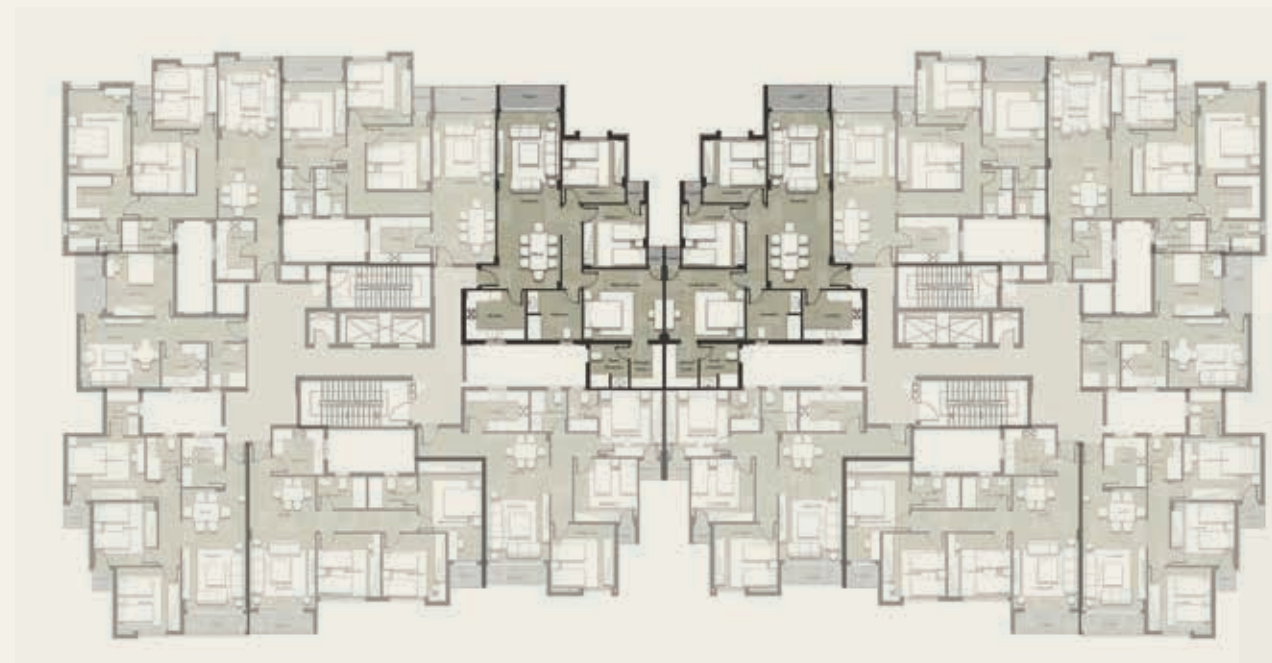
NOTE: Walls and columns are included in the dimensions

TYPICAL FLOOR

NOTE: Walls and columns are included in the dimensions

Gross Area **155 m²**

NO	Location	Dimensions
1	Entrance	2.0 x 1.4
2	Reception/Dining	4.0 x 7.7
3	Terrace 1	3.8 x 1.4
4	Kitchen	3.1 x 2.8
5	Bedroom 1	3.8 x 3.8
6	Bedroom 2	3.8 x 3.8
7	Master Bedoom	5.8 x 3.8
8	Master Bathroom	2.0 x 3.0
9	Bathroom	3.0 x 2.0
10	Terrace 2	2.1 x 1.5
11	Corridor	1.4 x 5.9



Gross Area **175 m²**

NO	Location	Dimensions
1	Entrance	1.2 x 1.5
2	Reception/Dining	3.8 x 10.2
3	Terrace 1	1.7 x 3.7
4	Kitchen	3.0 x 3.6
5	Bedroom 1	3.8 x 3.8
6	Terrace 2	1.3 x 1.2
7	Bedroom 2	3.8 x 3.8
8	Terrace 3	1.3 x 1.0
9	Master Bedoom	4.2 x 4.7
10	Master Bathroom	2.7 x 2.4
11	Dressing Room	2.7 x 2.0
12	Bathroom	3.0 x 3.3
13	Corridor	5.0 x 1.3

NOTE: Walls and columns are included in the dimensions



TYPICAL FLOOR

NOTE: Walls and columns are included in the dimensions

Gross Area 174 m²

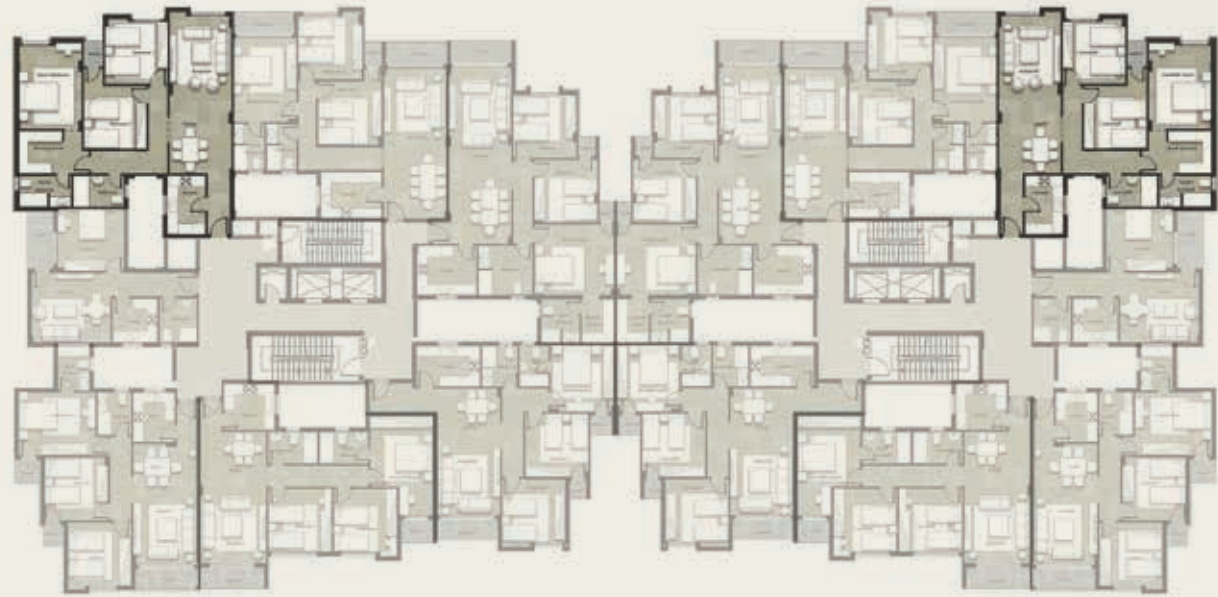
NO	Location	Dimensions
1	Entrance	1.4 x 3.7
2	Reception/Dining	9.5 x 3.7
3	Kitchen	3.7 x 2.5
4	Bedroom 1	3.8 x 4.1
5	Bedroom 2	3.8 x 3.7
6	Corridor-Terrace	1.2 x 1.0
7	Terrace	1.6 x 1.2
8	Master Bedoom	5.2 x 3.9
9	Master Bathroom	2.2 x 3.3
10	Master bedroom corridor 1	2.5 x 1.1
11	Master Bedroom corridor 2	0.5 x 1.3
12	Dressing Room	2.8 x 2.6
13	Bathroom	3.2 x 2.0
14	Corridor 1	1.5 x 3.5
15	Corridor 2	1.3 x 5.1



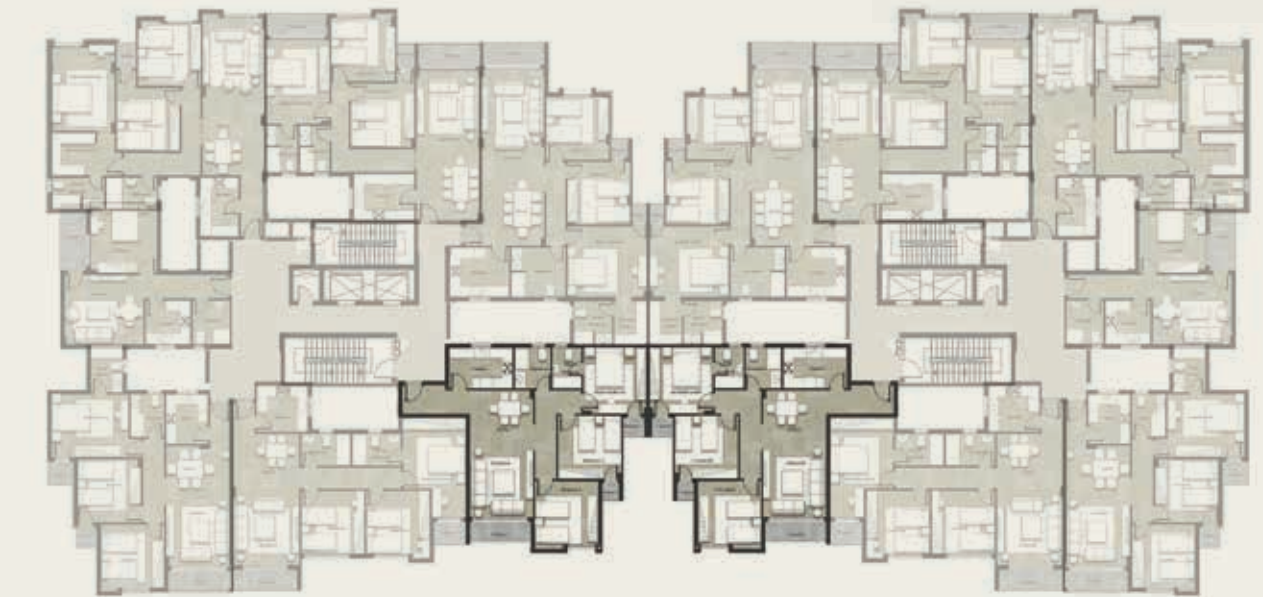
NOTE: Walls and columns are included in the dimensions

Gross Area 152 m²

NO	Location	Dimensions
1	Entrance	2.0 x 4.0
2	Reception/Dining	7.5 x 3.8
3	Terrace 1	3.7 x 1.6
4	Kitchen	3.8 x 2.5
5	Bedroom 1	3.8 x 3.8
6	Bedroom 2	3.8 x 3.8
7	Terrace 2	1.2 x 1.3
8	Master Bedoom	3.9 x 3.8
9	Master Bathroom	2.5 x 1.9
10	Bathroom	2.5 x 2.2
11	Terrace 3	1.5 x 1.3
12	Corridor 1	5.2 x 1.4
13	Corridor 2	1.4 x 1.4



TYPICAL FLOOR



TYPICAL FLOOR

